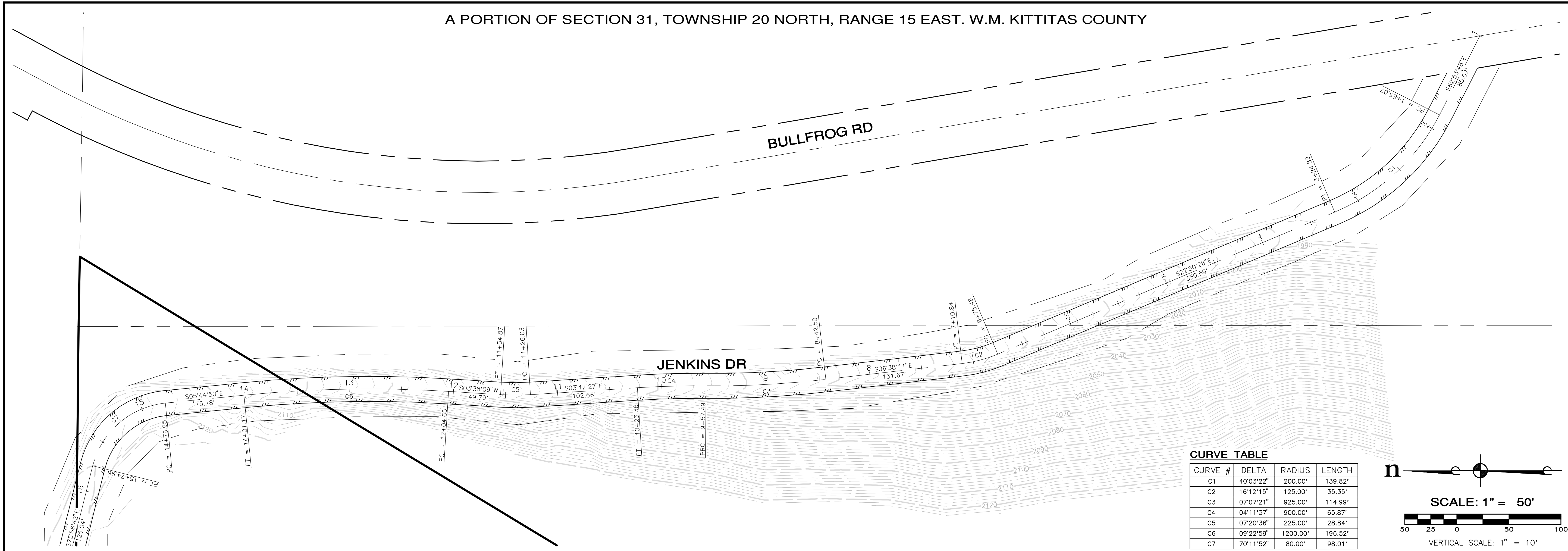
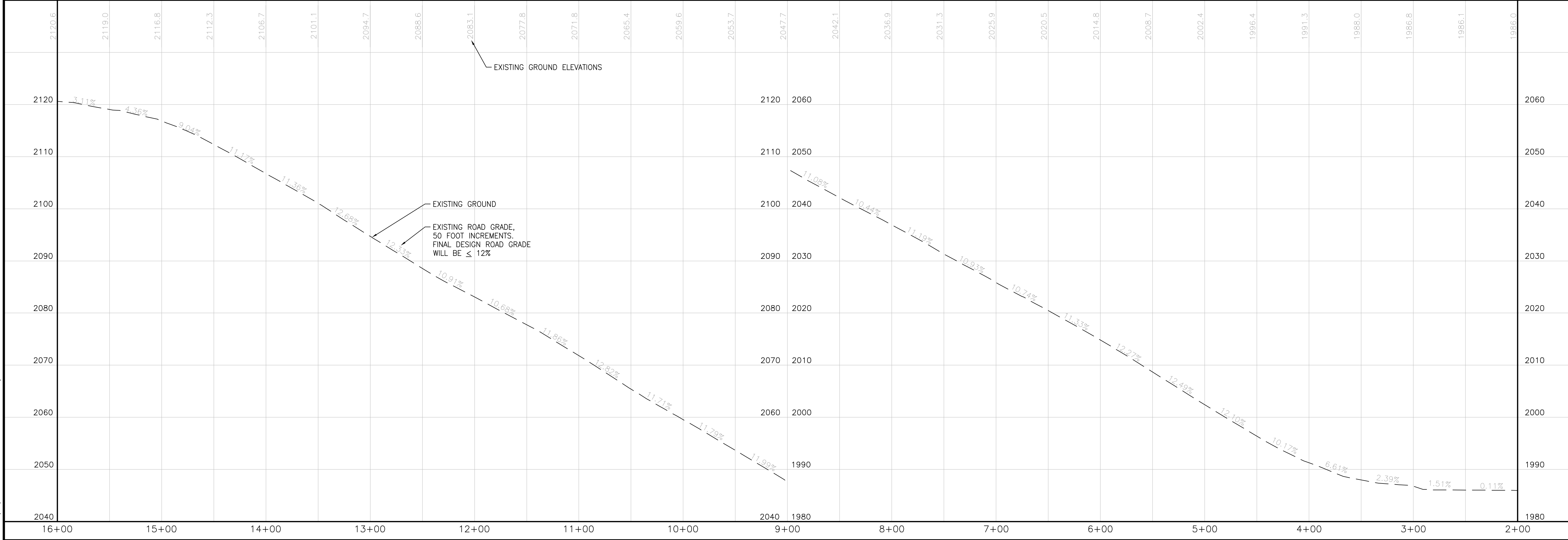
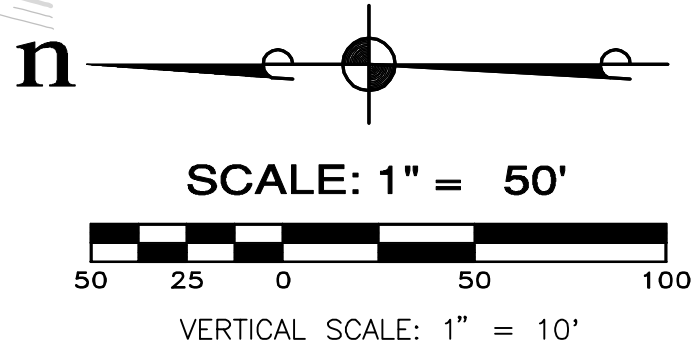


A PORTION OF SECTION 31, TOWNSHIP 20 NORTH, RANGE 15 EAST. W.M. KITTITAS COUNTY



CURVE TABLE

CURVE #	DELTA	RADIUS	LENGTH
C1	40°03'22"	200.00'	139.82'
C2	16°12'15"	125.00'	35.35'
C3	07°07'21"	925.00'	114.99'
C4	04°11'37"	900.00'	65.87'
C5	07°20'36"	225.00'	28.84'
C6	09°22'59"	1200.00'	196.52'
C7	70°11'52"	80.00'	98.01'



REVISIONS

NO.	DESCRIPTION/DATE	BY

NOT FOR CONSTRUCTION

ESM CONSULTING ENGINEERS, LLC
 2211 W. Dolarway Rd., Suite 1
 Ellensburg, WA 99926
 (509) 942-2408
 (509) 942-2409
 (509) 942-2410
 (509) 942-2411
 www.esmcivil.com
 Civil Engineering | Land Planning
 Public Works | Project Management | Landscape Architecture

TUMBLING RIDGE, LLC
TUMBLING RIDGE PUD
 JENKIS DRIVE PLAN AND PROFILE
 KITTITAS COUNTY WASHINGTON

JOB NO.: 1366-003-008
 DWG. NAME: EN-01
 DESIGNED BY: AH
 DRAWN BY: AH
 CHECKED BY:
 DATE: April 14, 2008
 DATE OF PRINT:
EN-01
 1 OF 3 SHEETS

File: \\E:\proj\Eng\ENR\ESM-1366\003-008\exhibit\EN-01.dwg
 Plotted: 4/14/2008 2:19 PM
 Plotted By: Arno Hernandez